



DELTA JS AG

**Machine Dynamics**  
Engineering \* Consulting \* Software

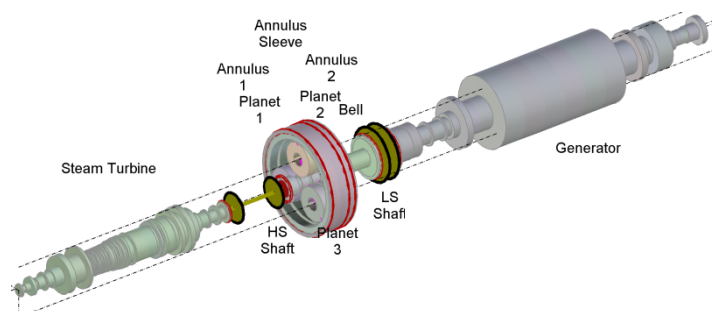
## MADYN 2000: Software for General Rotordynamics

### Unique Modelling Capabilities

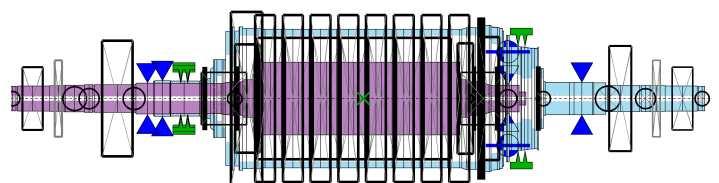
- ◆ Rotor gear bearing systems for torsional, lateral, axial and coupled analyses
- ◆ Parallel and planetary gears with stationary as well as rotating planet carriers
- ◆ Consideration of the lateral, torsional and axial coupling in gears
- ◆ Bearing types: Spring and damper, rolling element bearings, linear & nonlinear fluid film bearings, floating ring bearings, magnetic bearings (radial and axial)
- ◆ Rolling element bearings are considered with a 5x5 stiffness matrix considering the lateral and rotational stiffness about bending axes and the lateral, axial coupling.
- ◆ For fluid film bearings various effects can be considered: 2-phase flow in cavitation zones considering ambient pressure, turbulence, different oil supply conditions and axial sealing, thermo-elastic deformation, canting
- ◆ Tilting pad bearings with frequency dependent characteristic
- ◆ Magnetic bearing controllers can be modelled by proven controller building blocks similar to real systems.
- ◆ Bearing supports (casings and foundations): Spring mass damper, coupled transfer functions (couplings between different bearings are considered), state space matrices
- ◆ General spring (6x6 full stiffness and damper matrix)
- ◆ Flexible couplings with linear and nonlinear characteristics
- ◆ Fluids with speed dependent coefficients
- ◆ Elastic mounting of masses with an axial offset to their centre of gravity
- ◆ Superimposed shaft sections with different material, e.g. to model motor windings
- ◆ Temperature dependent materials
- ◆ Import of rotor data from text files via a flexible interface
- ◆ Active system for torsion allows modelling linear relations by state space matrices between torsional deflections and velocities and torques
- ◆ For further user specific modelling custom blocks can be defined.
- ◆ User defined nonlinearities (apart from the standard nonlinearities for fluid film bearings and flexible couplings) can be defined with the help of custom blocks and MATLAB code.

### Powerful Analytical Capabilities

- ◆ Static analyses: Force -, gear -, weight loads, misalignment (consideration of journal position in fluid films and the deformation in rolling element bearings)
- ◆ Damped eigenvalues: Complete systems are considered, e.g. consisting of the rotor, a magnetic bearing system and a stator system (casings and foundations), i.e. no iterative solution for frequency dependent characteristics.
- ◆ Harmonic response to unbalance, forces and moments, base acceleration
- ◆ Linear and nonlinear transient response to forces and moments, base acceleration
- ◆ Linear and nonlinear transient run ups and downs
- ◆ Parameter Variation: Undamped critical speed map, Campbell diagram (eigenvalues as a function of speed), bearing stiffness and damping variation, flexible coupling stiffness variation
- ◆ Optimization of magnetic bearing controller parameters with respect to damping, bearing forces and robustness
- ◆ Alignment optimization



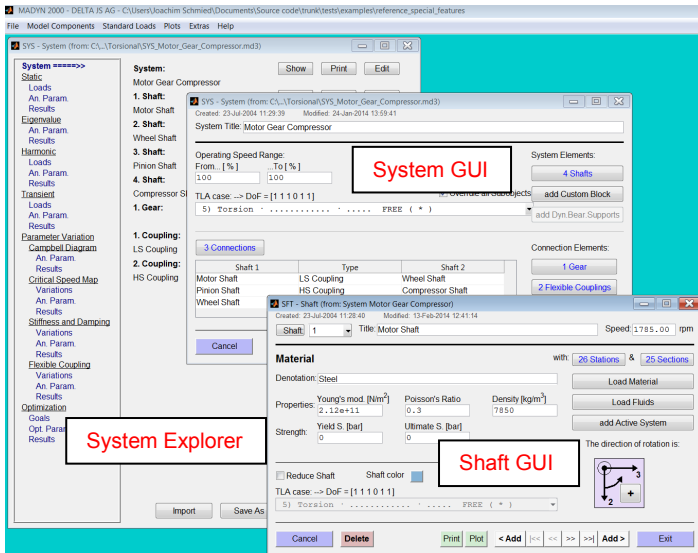
*Model of a steam turbine generator train with planetary gear*



*Model of a pump with inner and outer rotor*

## Easy to Use Graphical User Interfaces (GUIs)

- ♦ to model,
- ♦ to apply loads,
- ♦ to define and start analyses,
- ♦ to select and present results.
- ♦ The system explorer allows controlling every step of a rotor dynamic analysis: Modelling, defining loads and analysis parameters, viewing results



System explorer with graphical user interfaces

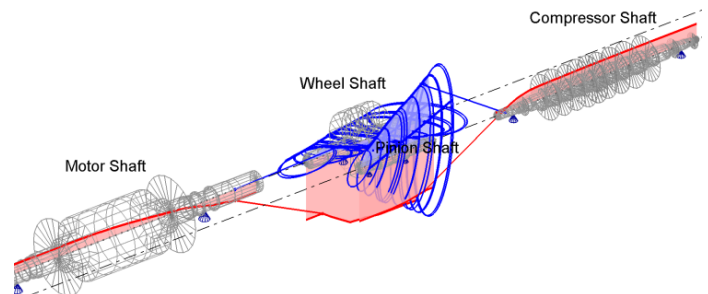
## Object Oriented Data Structure

- ♦ to have self-contained objects such as bearings, shafts, gears or systems,
- ♦ for easy combination and mounting of model parts such as bearings and shafts,
- ♦ to simply create libraries by storing objects in appropriate directories.
- ♦ Consistent and complete information (model, loads, analysis parameters and results) is stored in a system. Its behaviour is intelligent to maintain consistency, i.e. in case of changes affected results are cleared.

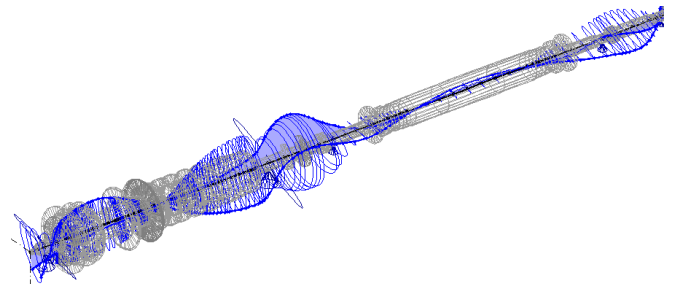
## Plots of Models and Results

- ♦ Plots are clear and practice oriented with complete and consistent information. Various options for the presentation of very complex information are offered (add data tips, select individual shafts ...)
- ♦ Plots can be copied and pasted for comparison of results between different systems.
- ♦ Model plots are available at all hierarchical levels: Systems, gears, shafts, bearings, couplings.
- ♦ Shape plots (results along shaft axes) for deformations, forces and moments, stresses
- ♦ Clear presentation of time dependent shapes
- ♦ Resonance plots with various options (selectable lateral directions, main axis of orbits, relative vibration, API evaluation of resonances for lateral vibrations)

- ♦ Presentation of eigenvalues in Campbell diagrams with sophisticated sorting and various other diagrams
- ♦ Various other diagrams for parameter variation results
- ♦ Plots for the time history, orbits and shapes of transient response results



Coupled lateral torsional vibration mode



Natural mode of a power generation shaft train

## Automation of Analyses

- ♦ Batch processing files can be created and imported to different systems. The use of denotations for objects allows generalizing loads and analyses parameters for various systems.
- ♦ With the help of a command line interface objects can be addressed and their properties changed using WINDOWS scripting.

## Services

- ♦ A standard training within a general rotor dynamic seminar takes place twice a year. Individual trainings are offered either in DELTA JS or the client's offices.
- ♦ Support by e-mail and telephone
- ♦ Maintenance with regular updates. Updates include new features and improvements to enhance the user friendliness and robustness.

## How to contact DELTA JS:

DELTA JS AG  
Technoparkstrasse 1  
CH 8005 Zürich  
Switzerland

Phone: ++41 44 445 3130  
Fax: ++41 44 445 3139  
E-mail: [contact@delta-js.ch](mailto:contact@delta-js.ch)

Homepage: [www.delta-js.ch](http://www.delta-js.ch)